

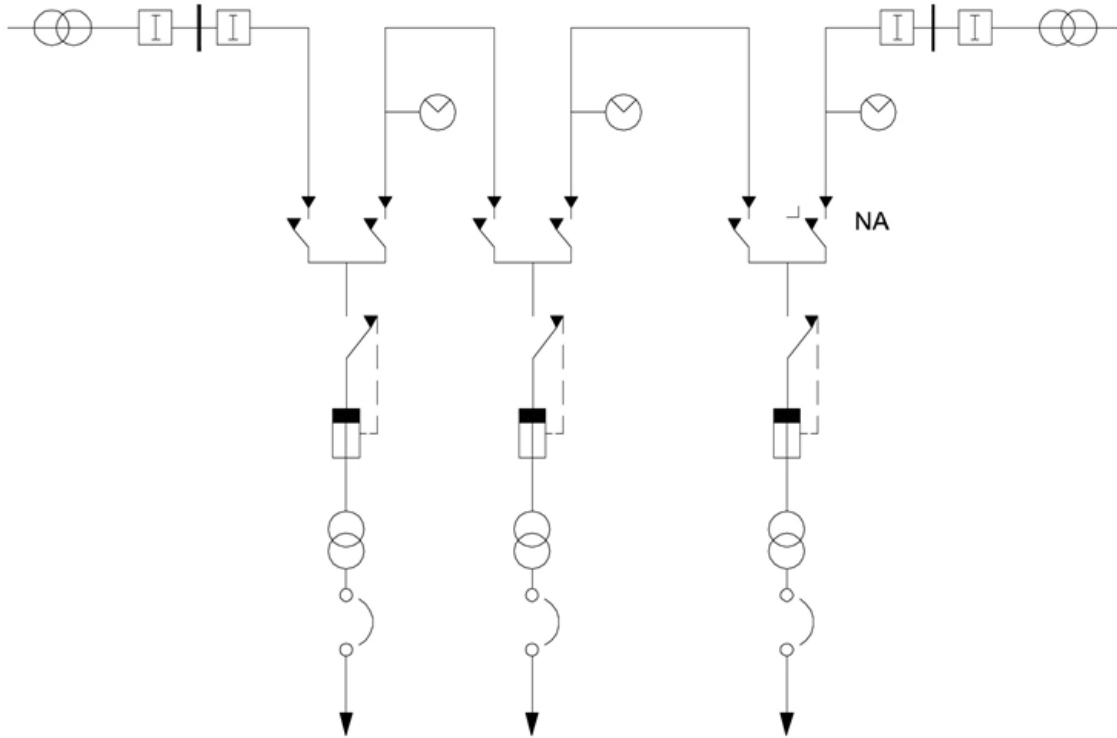
CTS510-3 Ubicación de indicadores de falla en la red subterránea

NORMA TÉCNICA









Elaborado por:	Revisado por:
DPTO NORMAS	Diseño de la Red
Revisión #:	Entrada en vigencia:
CTS 510-3	08/03/2018

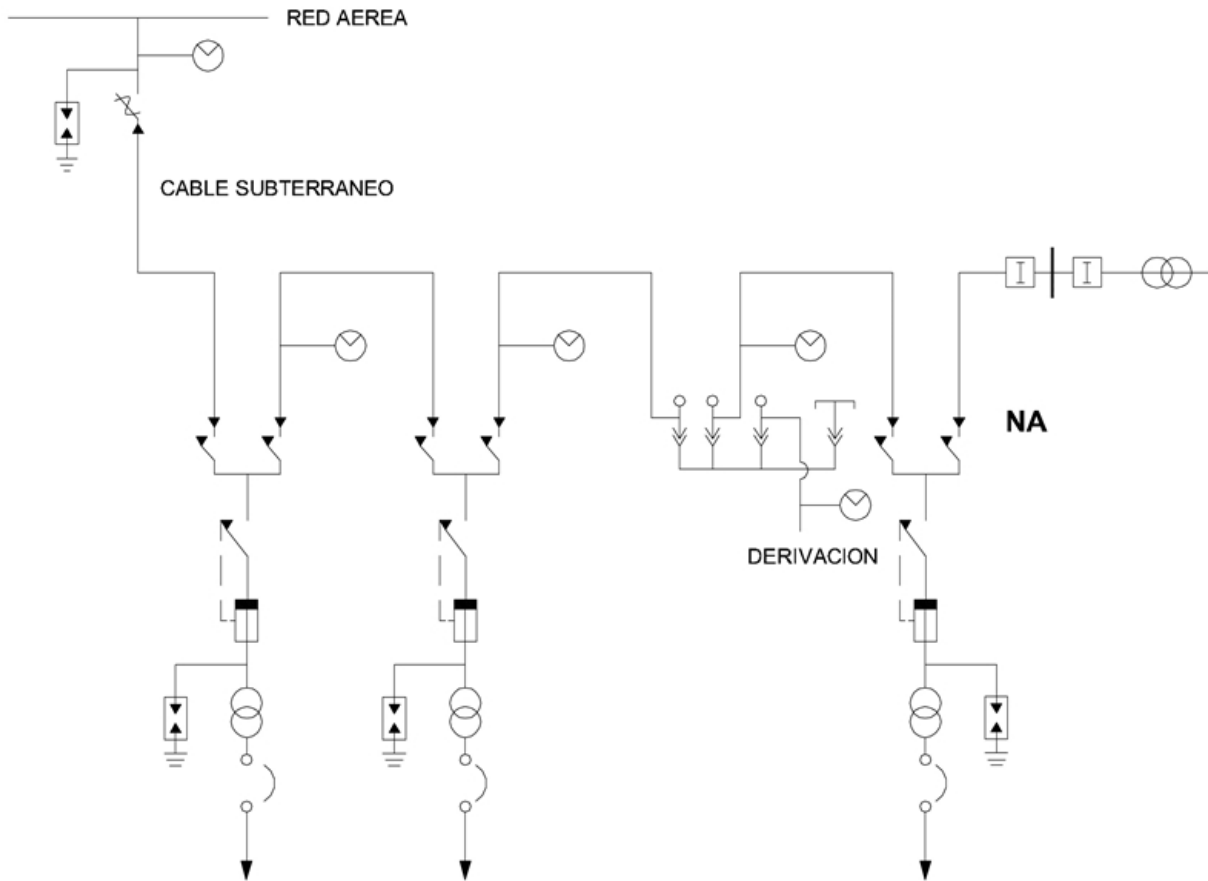


-Esta información ha sido extractada de la plataforma Likinormas de Codensa en donde se encuentran las normas y especificaciones técnicas. Consulte siempre la versión actualizada en <http://likinormas.micodensa.com/>











CONVENCIONES

-  INDICADOR DE FALLA
-  FUSIBLE LIMITADOR DE CORRIENTE
-  INTERRUPTOR AUTOMATICO DE BAJA TENSION
-  DPS - DESCARGADORES DE SOBRETENSION
- NA** NORMALMENTE ABIERTOS
-  INTERRUPTOR DE PÓTENCIA
-  TERMINAL DE CABLE M.T.
-  SECCIONADOR TRIPOLAR DE OPERACION BAJO CARGA
-  CORTACIRCUITOS



CONVENCIONES

-  INDICADOR DE FALLA
-  FUSIBLE LIMITADOR DE CORRIENTE
-  INTERRUPTOR AUTOMATICO DE BAJA TENSION
-  DPS - DESCARGADORES DE SOBRETENSION
- NA** NORMALMENTE ABIERTOS
-  INTERRUPTOR DE PÓTENCIA
-  TERMINAL DE CABLE M.T.
-  SECCIONADOR TRIPOLAR DE OPERACION BAJO CARGA
-  CORTACIRCUITOS